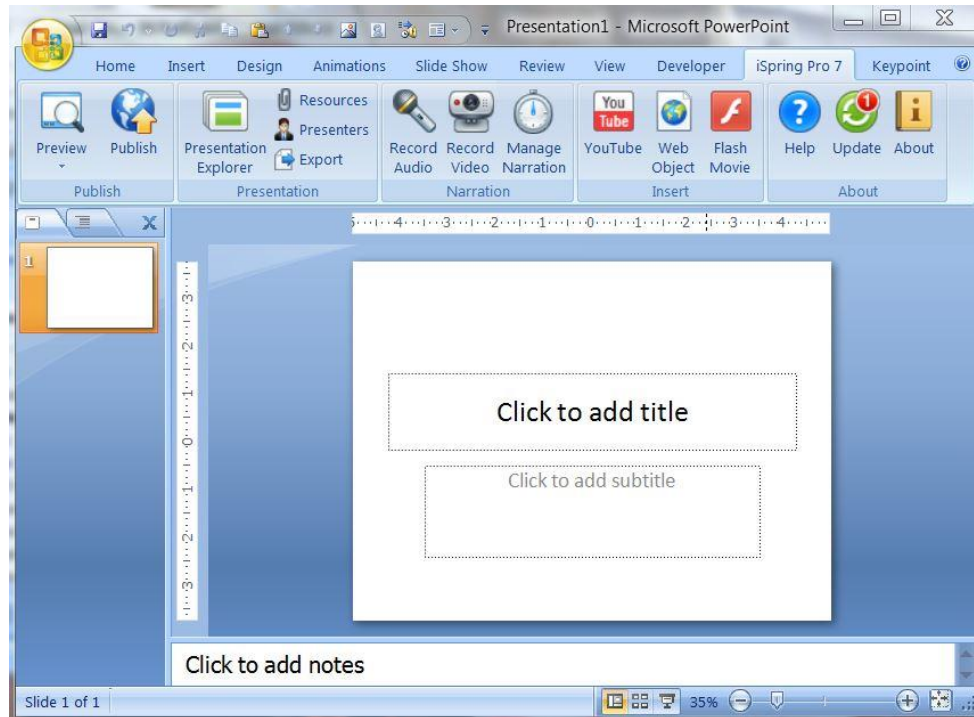




E-Learning Tools That Really Work!
Presented by: Dr. Vince Lepak



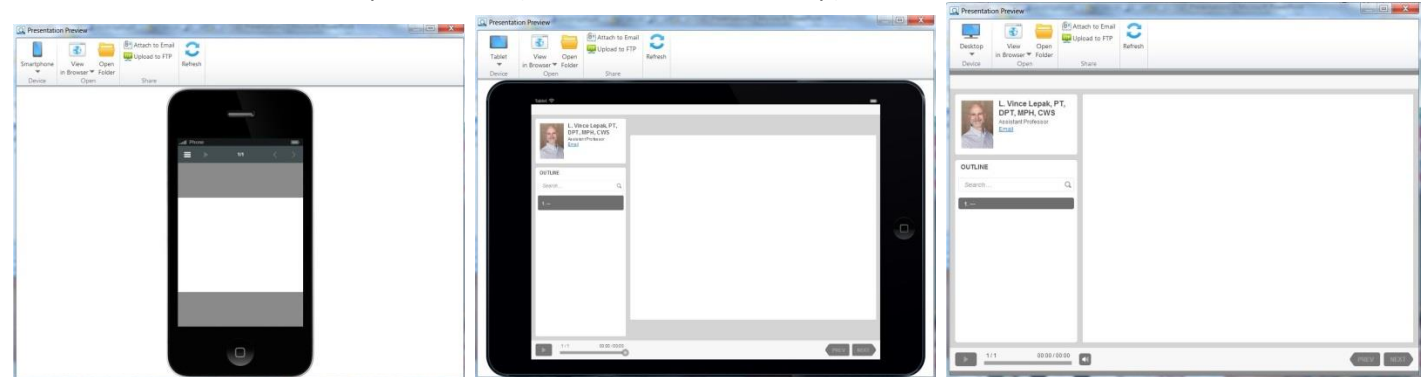
iSpring Pro is a PowerPoint add-in, and it appears as an additional tab on the PowerPoint ribbon.



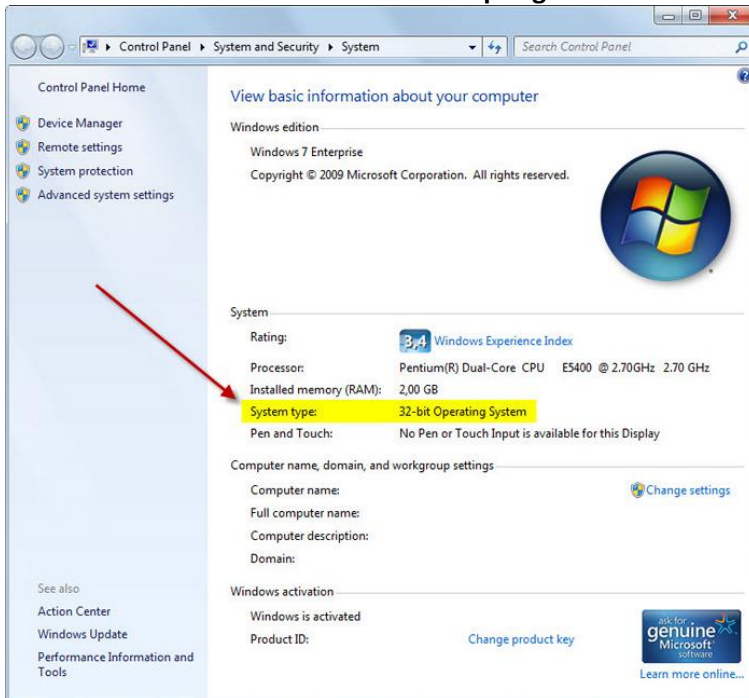
This program allows you to enhance your PowerPoint presentations with the following types of media, resources and e-Learning content:

- [Flash movies](#)
- [YouTube videos](#)
- [Web Objects](#)
- [Background audio and voice-overs](#)
- [Video narrations](#)
- [Presenter info](#)
- [External resources](#)

You can view the different output formats (mobile, tablet, or desktop)



Do I need a 64-bit or 32-bit version of iSpring Pro?



The version of iSpring product depends on the version Windows your computer is running.

Most Computers in the College are a **32-bit operating system version**.

A **64-bit** version of iSpring Pro should be installed if your computer is running a **64-bit** version of Windows.

If the **32-bit** version of Windows is installed, you should install the **32-bit** version of iSpring Pro.

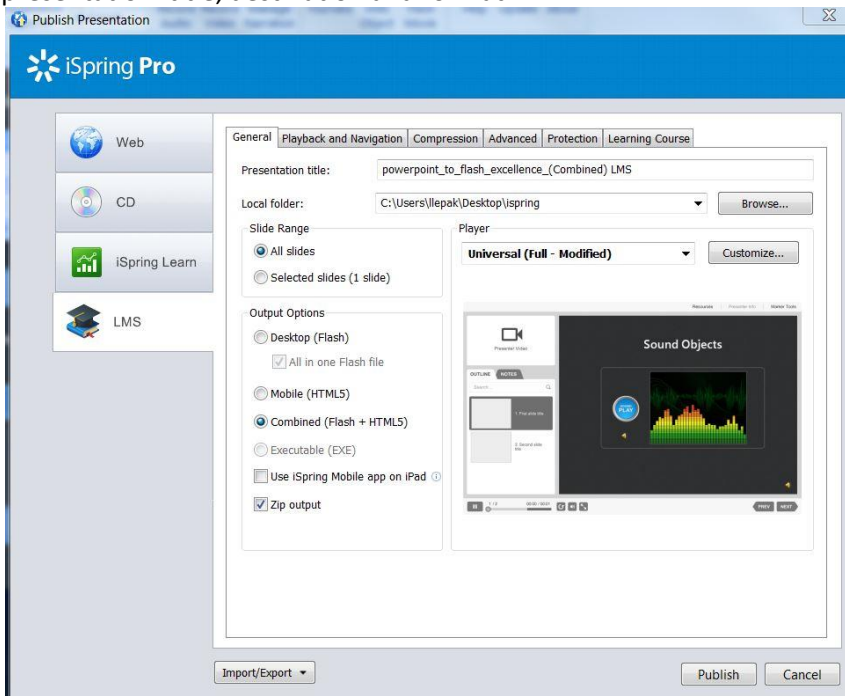
How do I find out which version of Windows my computer is running?

Windows 7, 8, or Windows Vista, do the following:

1. Go to **Control Panel > System and Security > System**.
2. Under System, you can view the system type under "See the name of this computer."

General Options for publishing using Combined+HTML5

The General tab allows you to specify the output of your PowerPoint presentation: title, destination and format.

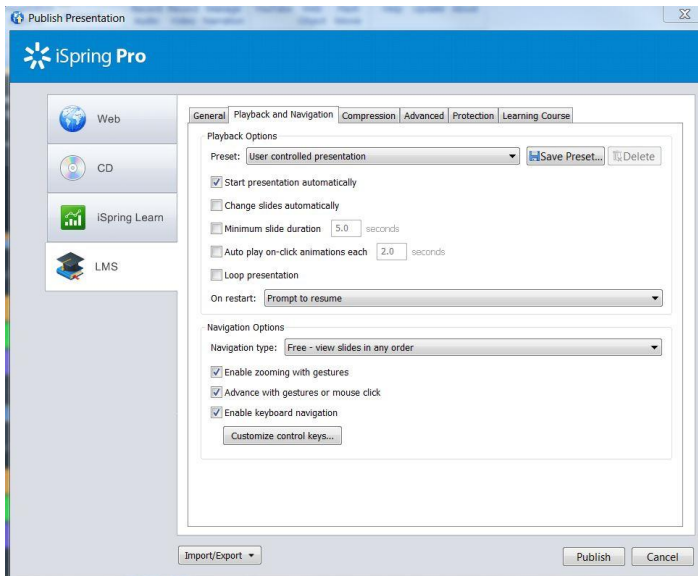


Output options: If you are publishing to D2L choose the following options:

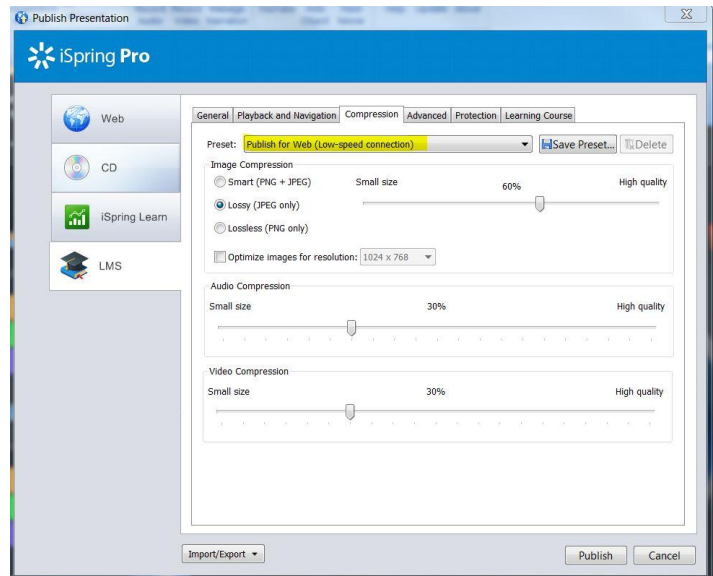
- 1) Choose the LMS (learning management system) tab on the Left.
- 2) Player Template Options: Select **Universal (Full)** from the drop-down. This is designed to work with the Combined (Flash + HTML5 smart package).
- 3) Combined (Flash + HTML5); Presentation will be published as a "smart" package which can be successfully launched on both desktop and mobile devices.
- 4) Do NOT check the iSpring Mobile app on iPad
- 5) Zip output; Check this so the file can be unloaded to D2L.

Warning: SCORM will be integrated into your grade book and you will be UNable to remove it from the grade book if you delete the file from your table of contents without first following the steps to remove SCORM from grade book listed towards the end of this document. D2L is currently working on a permanent fix for this issue.

Playback & Navigation

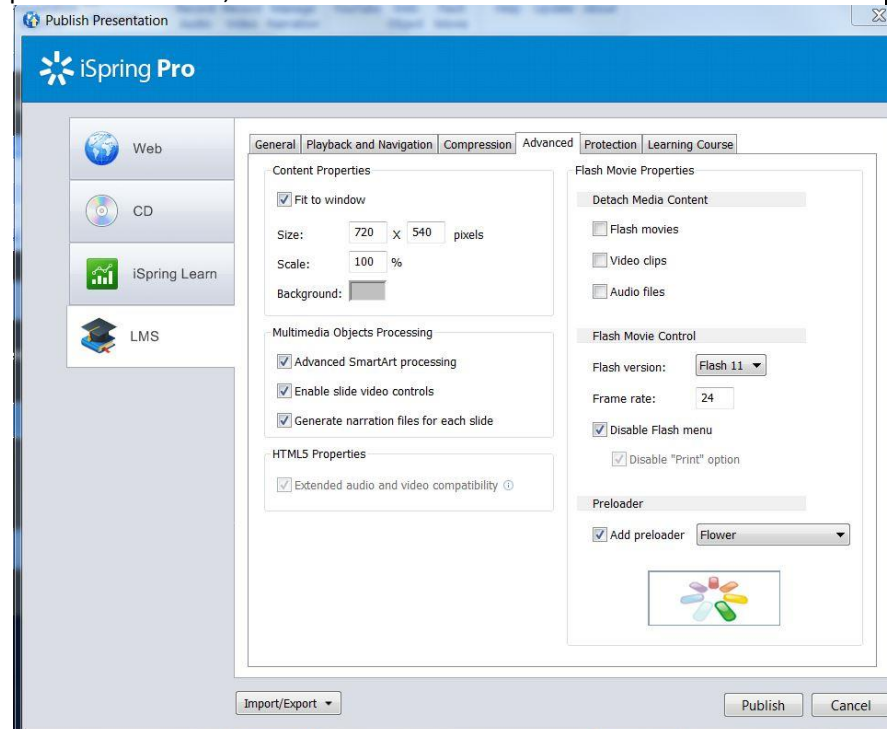


Compression



Advanced Properties

This tab allows you to specify the output of your PowerPoint presentation: title, destination and format.



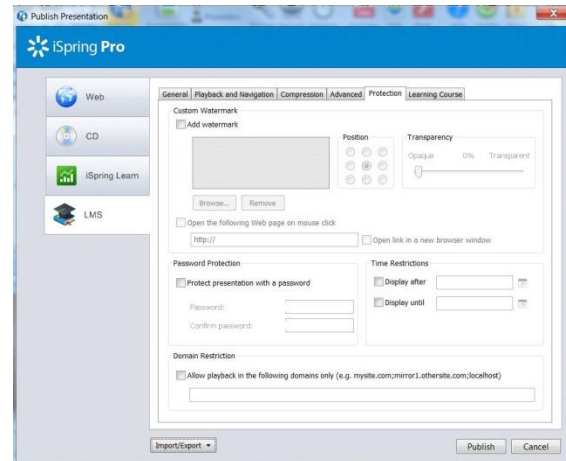
Check all the Multimedia Objects Processing and Animation and Transition boxes. If the HTML properties box is available, it should also be checked to work better with Firefox and Opera browsers.

- Detach Media Content: All of the boxes should be Unchecked.
- Flash movie control: Choose Flash 11 and check the Disable Flash Menu box.
- Preloader it is your choice.

Summary:

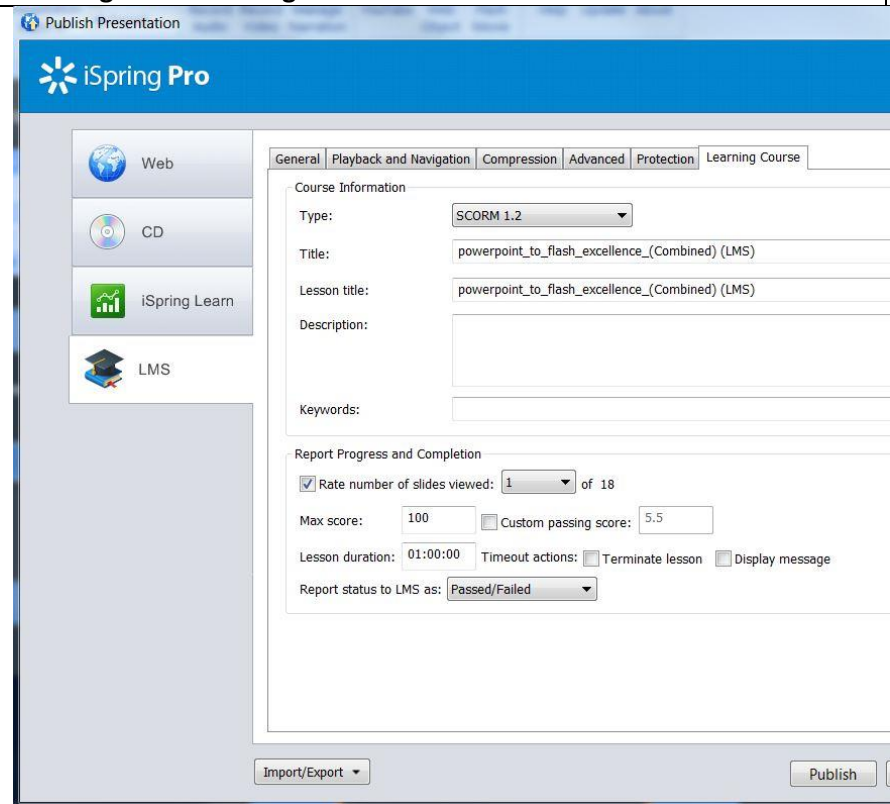
- 1) Everything on the Left is Checked.
- 2) Top three boxes on Right are UNchecked, disable flash menu.

Protection



You have the option of safeguarding your information.

Learning Course Settings



SCORM 1.2 or SCORM 2004 3rd edition. Sharable Content Object Reference Model (SCORM) is a collection of standards and specifications for web-based e-learning. Currently use the SCORM 1.2

Review YouTube video regarding importing and working with SCORM components:
<http://www.youtube.com/watch?v=fEwzTrclwg&feature=youtu.be>

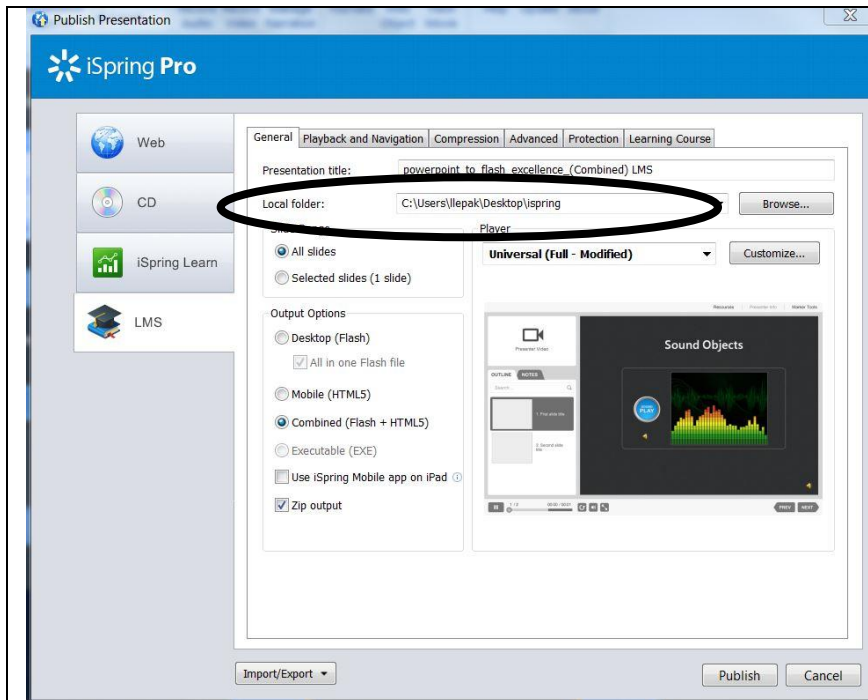
*note: They have you import the package from the Import/Export/Copy Components button through the Edit Course menu. My instructions below show you how to do it through the Table of Contents menu. Same process just through different menus.

Now Publish





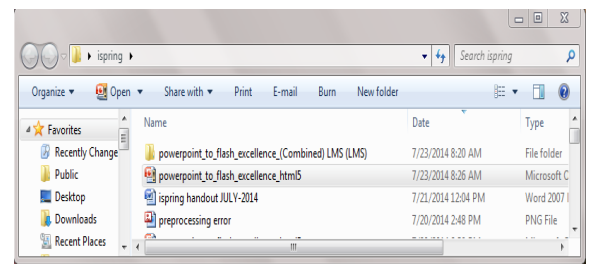
E-Learning Tools That Really Work!
Presented by: Dr. Vince Lepak



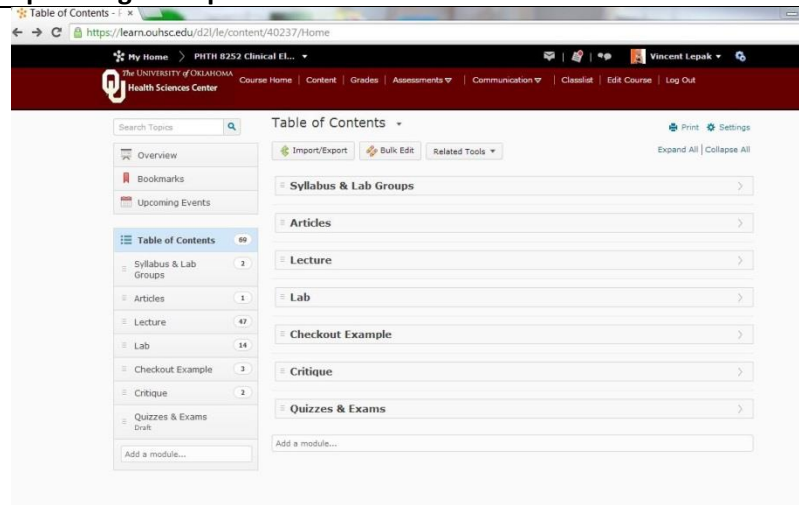
Where did it publish?

It published to your local folder where the powerpoint resides.

A subfolder is created in the same folder where the powerpoint resides. The Zipped file is now contained in that new subfolder which will have the title of the powerpoint presentation + (Combined) LMS (LMS).



Uploading the Zip file

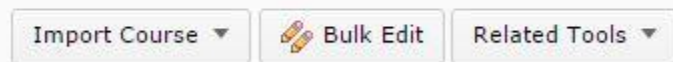


Go to the table of contents and choose import course/import course package. If uploading a stand alone flash version do NOT choose this option.

You can also import through the Edit Course menu.



Table of Contents



Select File

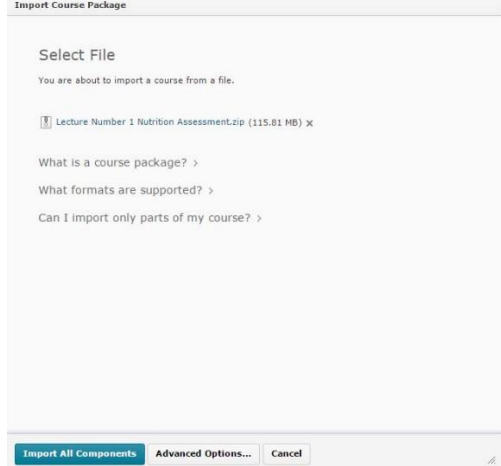
You are about to import a course from a file.

Drag and drop your course package here or use the "Upload" button to browse to your file. The file should be a .zip or another archive format. To add individual content (.doc, .ppt, .jpg, etc.), add a module in Content and place your file there.

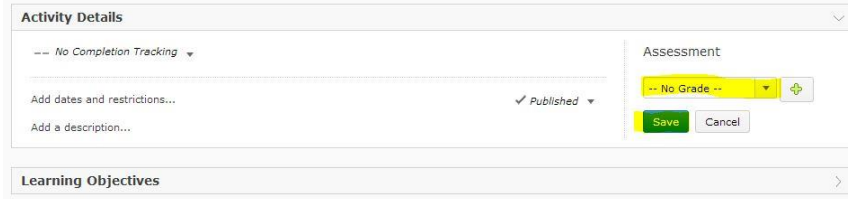


Steps to importing:

- 1) From the Table of Contents Menu choose import course/import course package.
- 2) Choose upload. Browse to find you're the package you are uploading.
- 3) There will be a green status bar showing you progress of import.
- 4) Once file is imported choose Advanced Options

	
<p>Reading Your Course Package (Step 2 of 5)</p> <p>Status: Your course package is being analyzed to discover available components for import.</p> <ul style="list-style-type: none"> ✓ Downloading the file ✓ Reading the package <p>Continue Go Back Cancel</p> <p>Customize Your Course Package (Step 3 of 5)</p> <p>Select Components to Import</p> <ul style="list-style-type: none"> <input checked="" type="checkbox"/> Select All Components <input checked="" type="checkbox"/> Content (2 item(s)) <ul style="list-style-type: none"> <input checked="" type="radio"/> Import all items <input type="radio"/> Select individual items to import <p>Advanced Options</p> <p>Import file to: /content/enforced/6737-TEST_GV100/ <input type="text" value="Example"/> <small>How do I select where to import the file to?</small></p> <p>When an existing file is encountered: <input type="radio"/> Overwrite the existing file <input checked="" type="radio"/> Do not overwrite the existing file <small>What happens if I overwrite the file?</small> </p> <p><input checked="" type="checkbox"/> Import metadata <small>What is metadata?</small> </p> <p>Continue Go Back Cancel</p> <p>Importing Your Course Package (Step 5 of 5)</p> <p>Status: Your course components are being imported into your course. This will be completed shortly.</p> <ul style="list-style-type: none"> ✓ Recalculating Import Manifest ✓ Importing Content Modules and Topics ✓ Cleaning up Import Files <p>Continue</p>	<p>5) A “Converting Your Course Package” screen appears, showing each stage of process.</p> <p>6) File will be downloading and read. Select Continue.</p> <p>7) Select all components</p> <p>8) Title presentation with a unique name (very important). This will create a folder in the course where the presentation will be stored. IMPORTANT: If you do not do this step it will place the presentation in the general folder for the course and if you have done this more than one with other Zipped folders then all of the hyperlinks will associate with the last zipped folder.</p> <p>9) Select “Do Not Overwrite the Existing File” and Import Metadata. Click Continue.</p> <p>10) Click continue again.</p> <p>11) Status screen appears. When complete, choose continue again. Choose View Content.</p> <p>View Content and you're done, UNLESS you don't want the SCORM package integrated into your Gradebook.</p>
<p>Editing SCORM from your gradebook: YouTube video regarding importing and working with SCORM components: http://www.youtube.com/watch?v=fEwzTrCJ_wg&feature=youtu.be</p> <p>Steps: 1) click on the item from the Table of Contents. </p>	<p>Warning: SCORM will be integrated into your grade book. To remove the SCORM from your gradebook, you will need to remove the gradebook association.</p>

- 2) Once it has started scroll down to the Activity Details menu.
- 3) Choose “No Grade” and save. Now you can delete from your gradebook.



The screenshot shows the 'Activity Details' form in iSpring. The 'Assessment' section is expanded, showing a dropdown menu with 'No Grade' selected. Below the dropdown are 'Save' and 'Cancel' buttons. The 'Published' status is indicated by a checkmark and the word 'Published'. The 'Learning Objectives' section is visible below the 'Assessment' section.

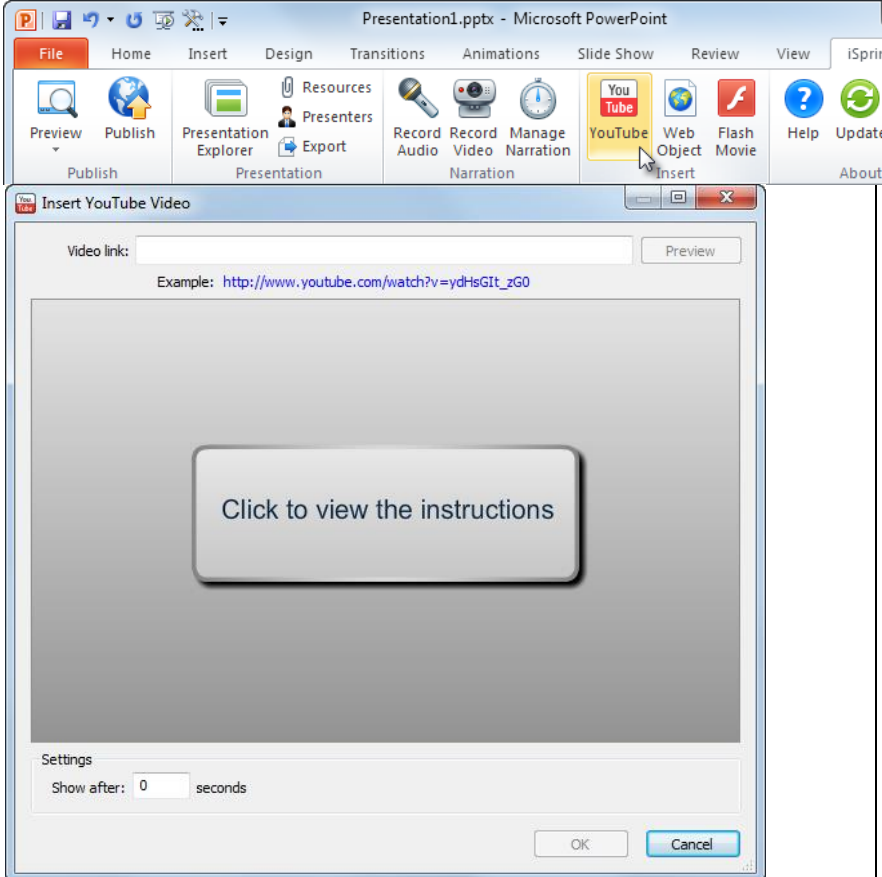
Enhancing Your Presentation/Inserting YouTube Videos

Note: The Internet connection is essential to insert YouTube videos into your presentation. Embedded YouTube videos must be available for public access.

iSpring Pro allows inserting YouTube videos into your presentation.

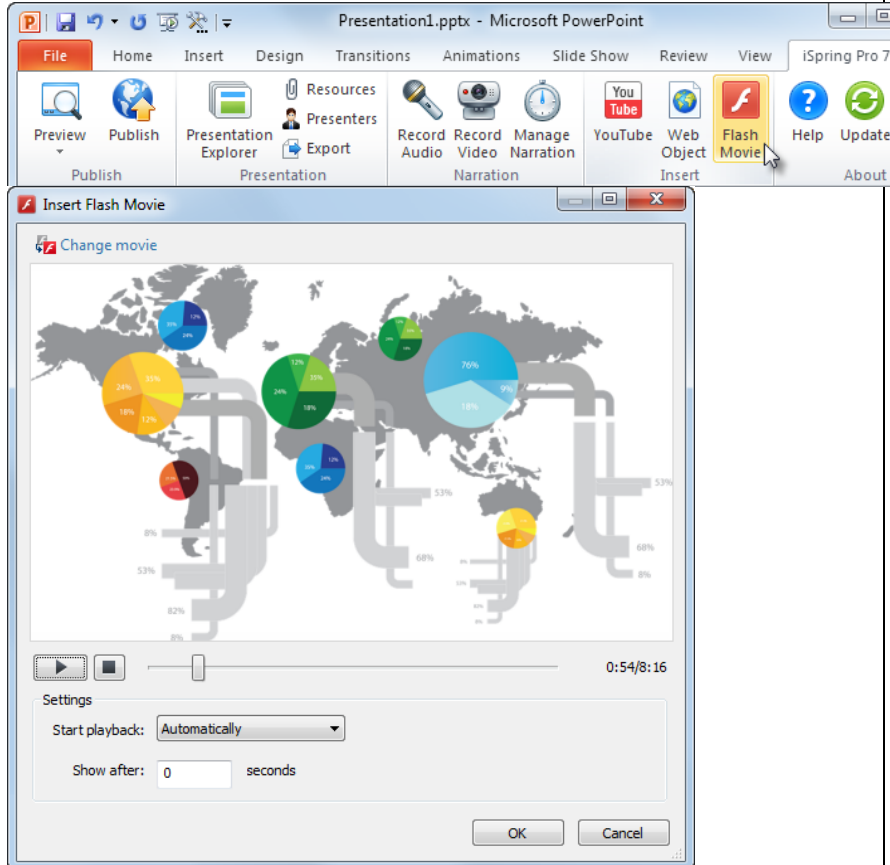
To insert a YouTube video, follow these steps:

1. Click the **YouTube** button on the iSpring Pro toolbar in PowerPoint.
2. Open www.youtube.com in your browser and find a video clip that you want to insert into your presentation. Then copy the URL of the selected video from the special URL field or from the address line of your browser.
3. Paste the YouTube video URL into the **Video Link** field and click **Preview** to view the clip.
4. Specify when your YouTube video will appear. The default delay is 0 seconds, which means that a video clip appears immediately. You can change the delay time according to your requirements.
5. Click **OK** to insert the YouTube video into your slide.
6. Important: For security reasons, Flash Player doesn't allow to view YouTube video in presentations that are opened from the local computer. Your Flash presentation needs to be uploaded to a website if you want to view this YouTube video.



Enhancing Your Presentation/Inserting Flash Movies

The **Insert Flash** feature allows you to easily insert external Flash movies into your PowerPoint slides. You can import **.swf** or **.flv** files to the slide.



To insert a Flash movie, follow these steps:

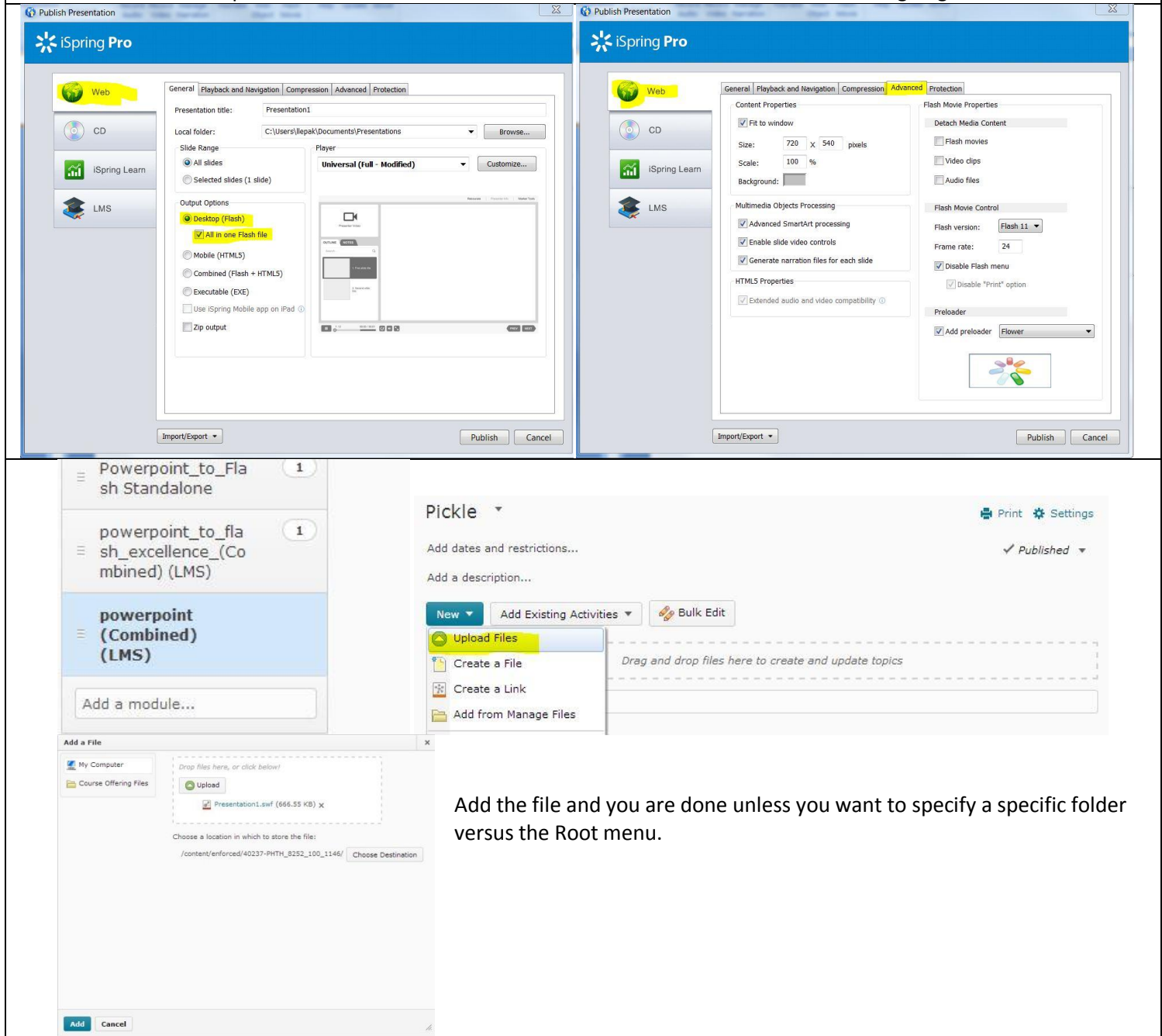
1. Click the **Flash Movie** button on the iSpring toolbar,
2. Choose a Flash file to insert into the presentation and click **Open**.
3. Preview and edit the selected Flash file in the **Insert Flash Movie** window. For more details, see **Flash Movie Options** below.
4. Click **OK** to add your Flash Movie to the slide.
5. You will see the first frame of a .swf file or a static placeholder if you added an .flv file. The inserted Flash movie can be easily resized and moved within the slide.

For a more comprehensive list of help documents and topics, please visit:

<http://www.ispringsolutions.com/help/7/index.jsp?topic=/pro/desktop/dialogs.html>

- **Getting started with iSpring Pro:**
<http://www.ispringsolutions.com/help/7/index.jsp?topic=/pro/desktop/dialogs.html>
- **Previewing a Presentation:**
<http://www.ispringsolutions.com/help/7/index.jsp?topic=/pro/desktop/dialogs.html>
- **Publishing Presentations:**
<http://www.ispringsolutions.com/help/7/index.jsp?topic=/pro/desktop/dialogs.html>
- **Managing Presentations:**
<http://www.ispringsolutions.com/help/7/index.jsp?topic=/pro/desktop/dialogs.html>
- **Managing Narrations:**
<http://www.ispringsolutions.com/help/7/index.jsp?topic=/pro/desktop/dialogs.html>
- **Publishing Presentations:**
<http://www.ispringsolutions.com/help/7/index.jsp?topic=/pro/desktop/dialogs.html>

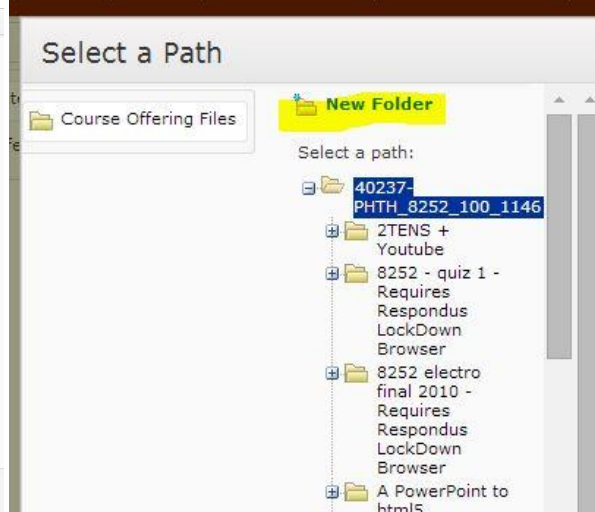
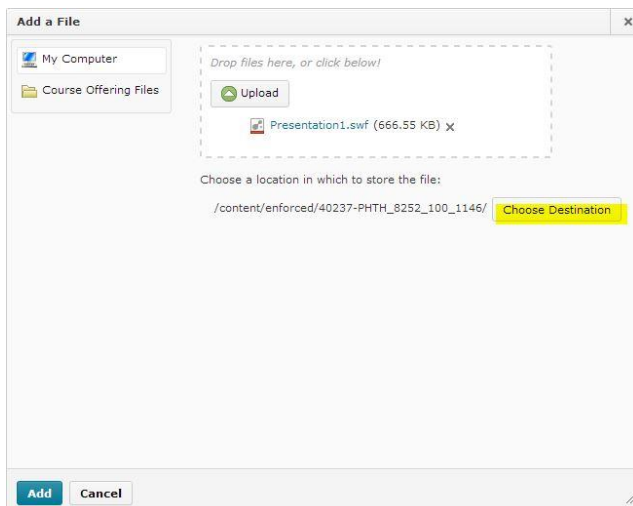
Inserting a Stand-Alone Flash file – If you don't want the SCORM management system. FYI, If you use a Stand-Alone Flash file students with MAC products will have to find a work around to view it since MAC is in an ongoing battle with Flash.



The image displays two screenshots of the iSpring Pro software interface. The left screenshot shows the 'Publish Presentation' dialog box with the 'General' tab selected. The 'Output Options' section is expanded, and 'All in one Flash file' is selected under 'Desktop (Flash)'. The right screenshot shows the 'Advanced' tab of the 'Publish Presentation' dialog box, where various settings for the flash file are configured, including 'Content Properties', 'Multimedia Objects Processing', and 'Flash Movie Properties'. Below these screenshots, there are three smaller images showing the process of uploading the flash file to a learning management system. The first image shows a list of modules in a system, with 'powerpoint (Combined) (LMS)' selected. The second image shows a 'Pickle' interface with a dropdown menu open, highlighting 'Upload Files'. The third image shows a file upload dialog box where the file 'Presentation1.swf (566.55 KB)' is being uploaded to a specific location.

Add the file and you are done unless you want to specify a specific folder versus the Root menu.

Adding a specific folder under the root menu



Create a New Folder - PHTH 8252
Clinical Electrotherapy Summer
2014 - The University of Oklahoma
Health Sciences Center

Location

/content/enforced/40237-PHTH_8252_100_1146/

Folder Name *

Create

Cancel

Choose Create and you are done