

Center for Human Performance Measurement

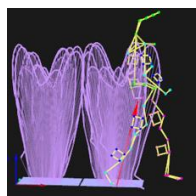
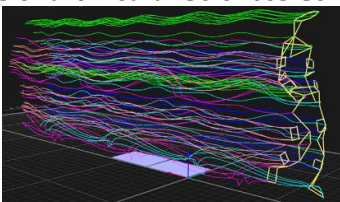
The **College of Allied Health** administrators are proud to announce the new **Center for Human Performance Measurement**. This Core Facility is directed by Dr. Carol Dionne, Associate Professor in the Department of Rehabilitation Sciences. Within the center is the newly installed motion analysis system, composed of 12 state-of-the-art motion capture cameras, 4 in-floor force sensor plates and 16 lead EMG that, together, analyze any type of human movement.

The center helps researchers study biomechanical aspects of human movement through kinematics, kinetics and muscle activation from a 3-dimensional perspective. The center's researchers can capture subtle deviations that may be early warning of pending injury or pathological process. This facility is the **sole provider of such human performance measurement to the region**. Center staff are able to provide a comprehensive, interprofessional study of normal and disordered human performance that optimizes function, including walking, running, lifting, carrying, jumping, throwing or dancing. The output of motion analysis provides researchers, educators, health care providers, students, and the public state-of-the-art measures related to human performance of basic daily activities, forms and modes of locomotion, and of elite, skilled or disordered movement.

The goal is to **advance human performance measurement to enhance health and well-being** through the development and application of new knowledge, guided by the principles of promoting discovery through research in human performance science and proving evidence to validate interventions that promote optimal performance, set on achieving the following goals:

- evaluate human performance to minimize injury risk ;
- educate health care students and practitioners to become leaders in human performance measurement that promotes optimal performance;
- provide service via valid measures of human performance.

Center for Human Performance Measurement services are available this to members of the Health Sciences Center and community.



CENTER FOR HUMAN PERFORMANCE MEASUREMENT

In **REHABILITATION SCIENCES**

Center Director:

Carol Dionne DPT, PhD



Staff Engineer:

Len Wilson, MSEE



Location:

Center for Human Performance Measurement
University of Oklahoma
Health Sciences Center
1200 North Stonewall Ave
Oklahoma City, OK 73117

Telephone:

405-271-2131 ext 47161

Email

Carol-dionne@ouhsc.edu

CHPM@ouhsc.edu